

S Syracuse University

Teaching the Humanities and Social Sciences

Morgan Shaw
Dept. of English
mtshaw@syr.edu
[@morgantshaw](https://twitter.com/morgantshaw)

Erika Arias
Political Science Dept.
erarias@syr.edu
[@ErikaArias_](https://twitter.com/ErikaArias_)



Morgan Shaw, English Dept.

- 4th year Ph.D. student
 - **TA**: 2 years
 - **Instructor**: 1 year
- Reading, video games, hiking, etc.!



Chimney Bluffs State Park is an hour away from 'Cuse. It's a great spot for a day trip!

Erika Arias, Political Science Dept.

- 5th year Ph.D. student
 - **TA**: 2 years
 - **Instructor**: 1 semester
- Cooking, hiking, reading, being a plant-parent



Fall in upstate is beautiful! Definitely recommend the Adirondacks sometime in October to get the full variety of colors!

Shout Out!

- **Shewit Mikael**, M.A., Communication and Rhetorical Studies
- **Caitlin Smith**, Ph.D., Human Development and Family Science
- **Seth Knievel**, M.A., Communication and Rhetorical Studies



What are the Social Sciences and Humanities?

"Should I be in this room right now?"

Social Sciences

- Anthropology, Economics, Geography, Human Development, Political Science, Psychology, Sociology...

Humanities

- Communication and Rhetorical Studies, English, Philosophy, Religion, Women and Gender Studies, Writing and Rhetoric...

“Why Are We Lumped Together?”

- Theoretical alignment
- Teaching responsibilities
- Classroom facilitation

Teaching Responsibilities:

- Teaching Assistant (TA)**
- Grading Assistant (GA)
- Research Assistant (RA)
- Recitation Leader*
- **Instructor of Record** (Mentored Teaching)

Teaching Responsibilities (cont.):

Talk to someone in your department!

- Assigned professor
- Other graduate students***
- Advisor
- Administrative assistant
- Department chair

Classroom Facilitation:



- Support
- Liaison
- Generate discussion about material:
 - **Ironic distance**; “If I were to argue...”
 - **Strategic framing**; “What do you think” v. “Let’s discuss...”

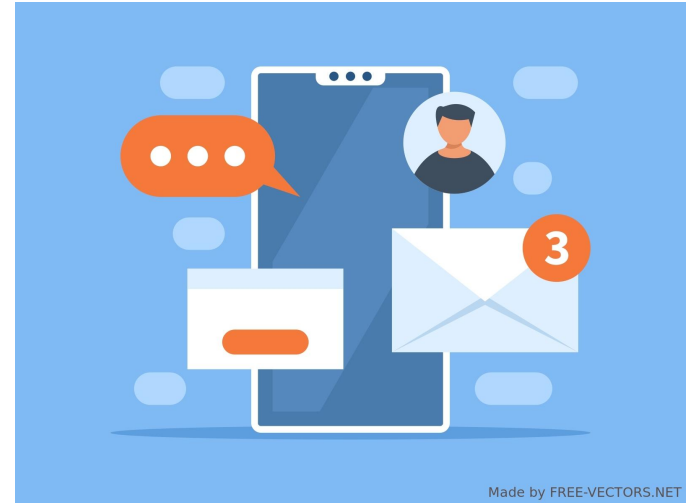
Classroom management *inside & outside the classroom

TA conversations with students

- Emails
- Office hours
- Face-to-face conversations

Prep work/lesson plans

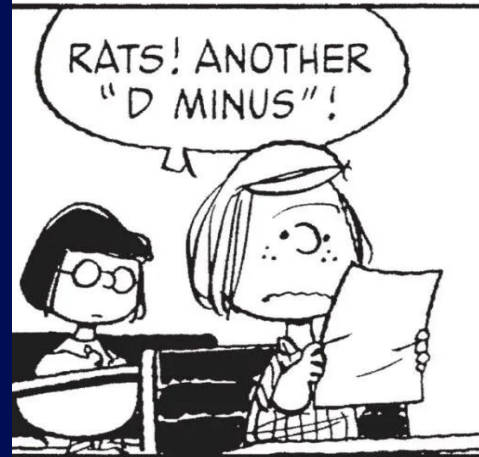
- How much time do you need?
- Are the activities productive?



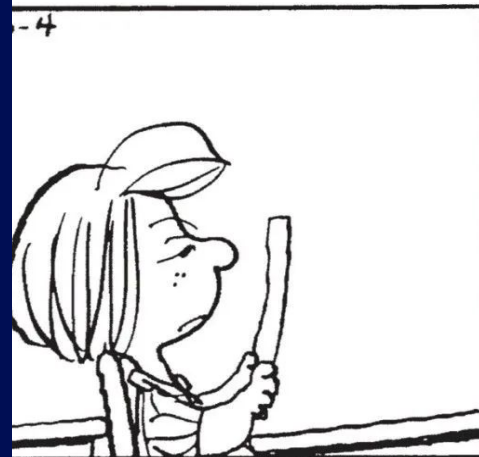
Boundary Setting as a TA

- Setting expectations (availability/typical response times)
 - Will you answer on the weekends?
 - Will you answer after 6pm?
 - Will you answer things that are available on the syllabus?
- Topics you can assist on
- Remember **you** are a student too

Grading Qualitative Work



@PEANUTSSPECIALS



Now It's Your Turn!



Q&A

Morgan Shaw
mtshaw@syr.edu

 [u
@morgantshaw](https://twitter.com/morgantshaw)

Erika Arias
erarias@syr.edu

 [@ErikaArias_](https://twitter.com/ErikaArias_)

